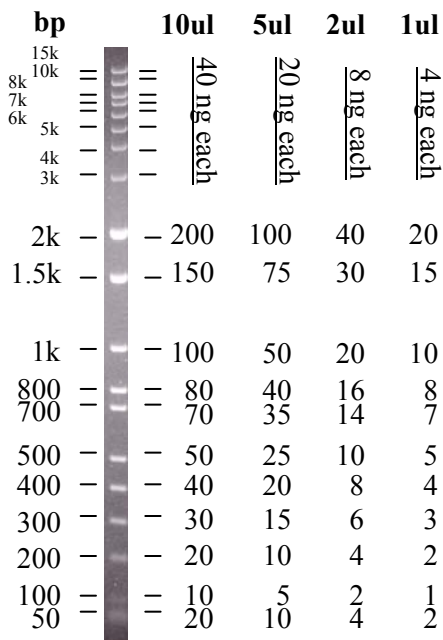


DigiDNA™ 50-15k

Cat #: 22001, 22002

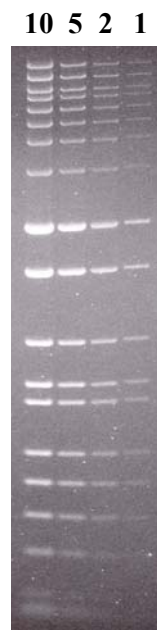
Base pairs Nanogram in each loading



DigiDNA™ 50-15k

Cat #: 22001, 22002

Loading volumes (ul)



FAQs about DigiDNA™50-15k

How much should it be loaded?

Recommended loading for this DNA standard is 5 ul. However other volumes may be loaded depending on gel and loading well sizes. For large gel with big loading wells, 10 to 20 ul may be loaded. For mini gel with small wells, 2 to 3 ul may be loaded. Most agarose gel can detect 1 ng DNA band (Molecular Cloning, Sambrook et al). Under most electrophoretic conditions, most DNA bands in DigiDNA™50-15k DNA standard can be detected with EtBr staining even 1 ul is loaded. Some of the low amount DNA bands such as 50, 100, and 200 bp bands may not be clearly visible by naked eyes, but they can be detected by a regular digital camera.

How accurate is the quantity determination?

DigiDNA™50-15k DNA standard is prepared by CsCl double banding. Extensive efforts have been made to ensure its quantity accuracy. If a UV reading gives different quantity than it is determined by our standards, our quantification is more accurate. This is simply because of contamination of DNA sample with impurities include but not limited to RNA.

Can we use this standard on buffer-less gel?

Yes. When you load this standard on a buffer-less gel, make sure you add some water in the same well to fill half of the well. Otherwise the DNA bands will not be well separated.

Can we use a density scanner to determine quantity with this standard?

Of course. Make sure the gel is evenly stained when you compare different DNA bands on the gel. If the gel is not evenly stained or EtBr is running off the bottom of the gel, the quantity will not be accurate. Our standards may be used to calibrate a density scanner.

Why are low or high molecular weight (MW) DNA bands sometimes not resolved or detectable?

The figures of these standards are prepared from a large 30 cm 1% agarose gel with EtBr in both gel and buffer. When a mini gel is used, only a low percentage gel ($\leq 0.8\%$) will separate and detect high MW bands and only a high percentage gel ($\geq 2\%$) will separate and detect low MW bands.

The standard is stable at 4 °C for 6 months. Please cut or fold on the lines for convenient posting or filing.